

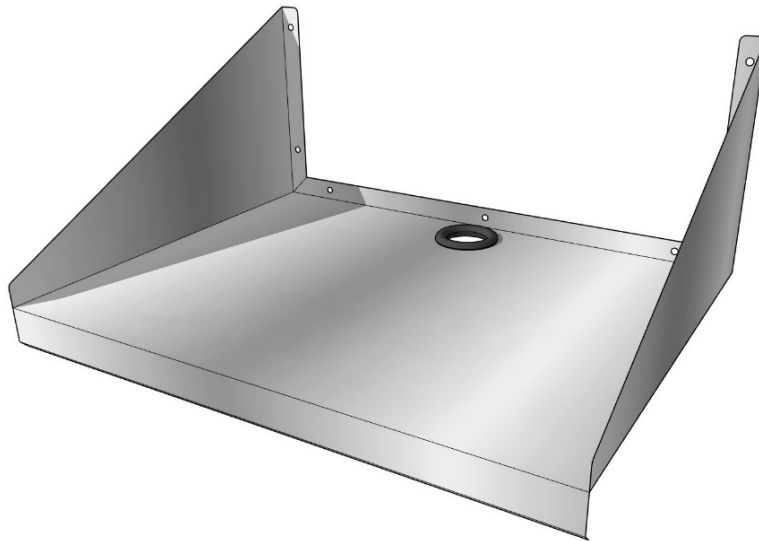
TITAN STAINLESS CUSTOM FOODSERVICE FABRICATION

502 Usher Street · Pageland, SC · 704-243-8717 · www.titan-stainless.com



MICROWAVE SHELF

TITAN STAINLESS Microwave shelves are formed from a single piece of 16 gauge stainless steel for superior strength. "Inverted" wall brackets keep the microwave in place, and are provided with holes for mounting the shelf to the wall. The surface of the shelf features a 2" grommeted opening for a cord and plug to pass through. The front edge features our standard nosing: 1-1/2" flange down with 1/2" return at 45°. All welds are ground and polished to a smooth finish.



MODEL NUMBER SELECTION / INFORMATION

(Example #: MWS-2418)

Microwave shelves are available in two sizes, 24" long x 18" wide (front-to-back), and 24" long x 24" wide (front-to-back), which accommodate the majority of commercial-use microwaves.

- See **AutoQuotes™** for full list of model numbers and pricing, along with all additional accessories
- Custom sizes and configurations are available upon request

